



# G. GIOANOLA

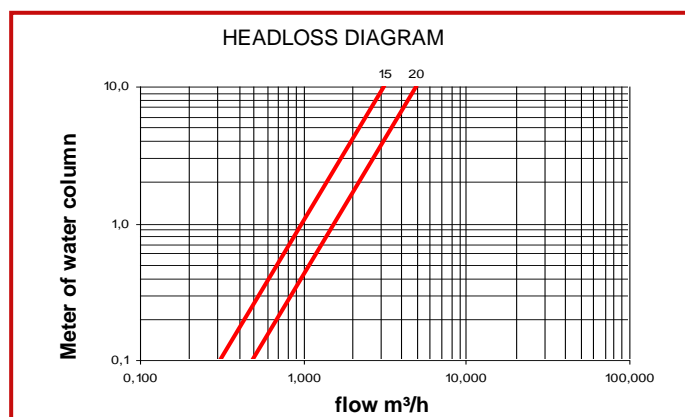
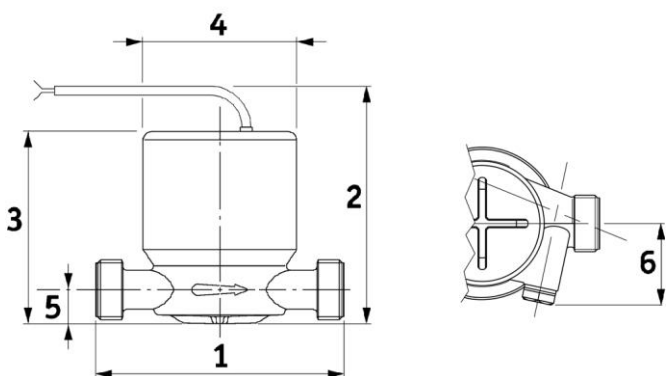
METERING EFFICIENCY

## CSLC DN 15 and DN 20 velocity heat meter for heating, solar and industrial applications

- MI004 MID approved
- For hot water max 90 °C (available version for hot water max 120°C)
- Accuracy class 2 EN1434- Environmental class B
- Mod CSLC-IS/15 DN15 Q<sub>p</sub> 1,5 m<sup>3</sup>/h with M10x1 temperature sensor pocket
- Mod CSLC-IS/20 DN20 Q<sub>p</sub> 2,5 m<sup>3</sup>/h with M10x1 temperature sensor pocket
- Mod CSLC/15 DN15 Q<sub>p</sub> 1,5 m<sup>3</sup>/h without temperature sensor pocket
- Mod CSLC/20 DN20 Q<sub>p</sub> 2,5 m<sup>3</sup>/h without temperature sensor pocket
- DN15 version Q<sub>p</sub> 0,6 m<sup>3</sup>/h available on request
- 360° rotating dry dial, magnetic proof from external influences through a metallic protection cover
- Horizontal and vertical installation
- Max working pressure 16 bar
- Reed switch (clean open collector), max voltage 24 V, 0,2 A, 2 mt standard length cable
- Pulse values (K) to be stated when ordering: K1 or K10 (other pulse values K available on request)



| Technical data  | DN15     | DN20     |
|---|----------|----------|
| Size (inches)   | G3/4     | G1       |
| Nominal Flow rate Q <sub>p</sub> (m <sup>3</sup> /h)                                | 1,5      | 2,5      |
| Max flow rate Q <sub>s</sub> (m <sup>3</sup> /h)                                    | 3        | 5        |
| Min. flow rate Q <sub>i</sub> with error ±5% (l/h)                                  | 30       | 50       |
| Max working temperature (in brackets is the optional max. working temperature) (°C) | 90 (120) | 90 (120) |
| 1 – Length without couplings (mm)   | 110      | 130      |
| / – Length including couplings (mm)   | 190      | 228      |
| 2 – Max height including reed switch (mm)   | 106,5    | 110,5    |
| 3 – Max meter height  | 81,5     | 85,5     |
| 4 – Max diameter (mm)   | 71       | 71       |
| 5 – Height of tube (mm)   | 16       | 19       |
| 6 – Temperature sensor pocket length M10x1 - only mod. CSLC-IS (mm)                 | 38       | 38       |
| Weight without couplings (g)  | 675      | 775      |



The company's policy is one of continuous product improvement and the right is reserved to modify the specifications contained herein without notice illustrations are not binding. 06-22