

# G. GIOANOLA



## IDRO-OLONA

**MID**

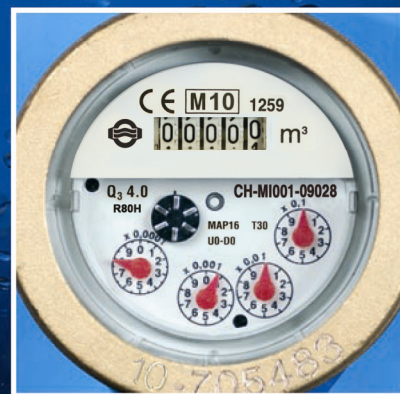
2004/22/CE

MODELS  
IBRF/15  
IBRF/20  
IBRF/25  
IBRF/32  
IBRF/40  
OBRF/50



MODELS  
IDRF/15  
IDRF/20  
IDRF/25  
IDRF/32  
IDRF/40  
ODRF/50

MODELS  
IPRF/15  
IPRF/20  
IPRF/25  
IPRF/32  
IPRF/40  
OPRF/50



- ❖ Multi-jet water meter, direct reading, temperature classes T30 and T50
- ❖ Mod. IBRF-OBRF WET dial, measuring range R80 and R160, for clean water
- ❖ Mod. IPRF-OBRF LIQUID FILLED SEALED counter type, measuring range R80 and R160, for turbid water
- ❖ Mod. IDRF-ODRF, FULLY LIQUID FILLED SEALED counter type, measuring range R80 and R160, for turbid water
- ❖ **U0-D0**: straight pipe not required upstream or downstream the meter
- ❖ All models are available with non return valve, upon request
- ❖ All models are **MID** approved according to the European Directive **2004/22/CE** (module B+D) and in compliance with the norms **EN 14154/2007** and **OIML R49/2006**
- ❖ All models are certified for use with water for human consumption, according to the **D.M. 174** of 6/4/ 2004
- ❖ All models, on request, can be supplied pulsed output or **preset for remote reading**

# IDRO-OLONA

DN - in mm-inches			15 - 1/2	20 - 3/4	25 - 1	32 - 1.1/4	40 - 1.1/2	50 - 2
Q <sub>3</sub>	Permanent flow rate	m <sup>3</sup> /h	2,5	4,0	6,3	10	16	25
Q <sub>4</sub>	Maximum flow rate for short period	m <sup>3</sup> /h	3,125	5,0	7,875	12,5	20	31,250
Q <sub>2</sub>	Transitional flow rate with measuring range R80 [MPE ±2%]	l/h	50	80	126	200	320	500
Q <sub>1</sub>	Minimum flow rate with measuring range R80 [MPE ±5%]	l/h	31,25	50	78,75	125	200	312,5
Q <sub>2</sub>	Transitional flow rate with measuring range R160 [MPE ±2%]	l/h	25	40	63	100	160	250
Q <sub>1</sub>	Min. flow rate with measuring range R160 [MPE ±5%]	l/h	15,63	25	39,38	62,5	100	156,25
S	Accuracy at measuring range R80	l/h	8	10	19	19	40	40
S	Accuracy at measuring range R160	l/h	4	6	10	10	15	20
ΔP	Pressure loss class	bar	0,63	0,63	0,63	0,63	0,63	0,63
MAP	Maximum allowed working pressure	bar	16	16	16	16	16	16
	Dial register from / to	m <sup>3</sup>	0,0001/100.00	0,0001/100.00	0,0001/100.00	0,0001/100.00	0,0001/100.000 o 1.000.000	
A	Length without couplings	mm	110-115 130-145 165-170 190	160-165 190	220-260	220-260	300	300
	Length with couplings	mm	190-195 210-225 245-250 270	260-265 290	320-360	320-360	440	460
B	Maximum diameter	mm	96	96	100	100	136	136
C	Height with open lid	mm	185	185	200	200	210	220
D	Height with closet lid	mm	105	105	120	120	130	140
E	Height of tube	mm	35	35	40	40	60	70
	Weight with couplings	kg	1,650	1,800	3,200	3,500	6,100	9,700
	Weight without couplings	kg	1,500	1,550	2,750	2,800	5,100	7,400

## MODELS:

### Temperature classes T30-T50 WET dial

IBRF/15 R80	IBRF/15 R160
IBRF/20 R80	IBRF/20 R160
IBRF/25 R80	IBRF/25 R160
IBRF/32 R80	IBRF/32 R160
IBRF/40 R80	IBRF/40 R160
OBRF/50 R80	OBRF/50 R160

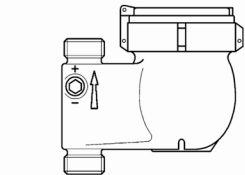
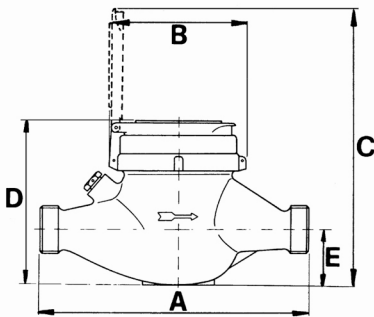
### Temperature classes T30-T50 LIQUID FILLED SEALED counter type dial

IPRF/15 R100	IPRF/15 R160
IPRF/20 R100	IPRF/20 R160
IPRF/25 R100	IPRF/25 R160
IPRF/32 R100	IPRF/32 R160
IPRF/40 R100	IPRF/40 R160
OPRF/50 R100	OPRF/50 R160

### Temperature classes T30-T50 FULLY LIQUID FILLED SEALED counter type dial

IDRF/15 R100	IDRF/15 R160
IDRF/20 R100	IDRF/20 R160
IDRF/25 R100	IDRF/25 R160
IDRF/32 R100	IDRF/32 R160
IDRF/40 R100	IDRF/40 R160
ODRF/50 R100	ODRF/50 R160

The Company's policy is one of continuous product improvement and the right is reserved to modify the specifications contained herein without notice.



Vertical riser body  
for vertical installation  
available upon request



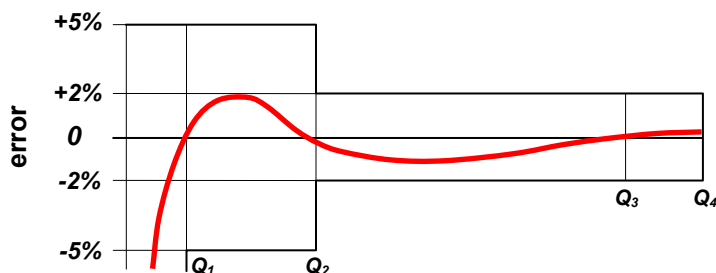
## G. GIOANOLA

### SISMA WATER METERS

Strada Alessandria 50  
Tel. +39.0141.793536 – Fax +39.0141.702757  
**14049 NIZZA MONFERRATO (AT) – ITALY**

E-mail: [info@gioanola.it](mailto:info@gioanola.it)  
Web: <http://www.gioanola.it>

### TYPICAL ACCURACY CURVE



### HEAD LOSS DIAGRAM

