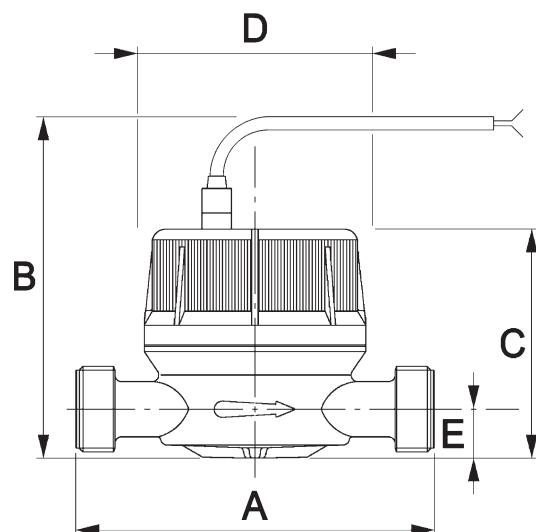




G. GIOANOLA



Nominal size of the meter	13	20
Qmax - Maximum flow rate (m ³ /h)	3	5
Qn - Nominal continuous flow rate (m ³ /h)	1,5	2,5
Qt - Transitional flow rate $\pm 2\%$ (l/h)	120	200
Qmin - Minimum flow rate $\pm 5\%$ (l/h)	30	50
Working pressure (bar)	16	16
A) Length without pipe fittings (mm)	110 - 80	130
Length with pipe fittings (mm)	190 - 160	228
B) Height (emitter included) (mm)	95	99
C) Height of the meter (mm)	66	70
D) Maximum diameter (mm)	80	80
E) Height of tube (mm)	16	19
Weight including pipe fittings (kg)	0,740	0,940
Weight without pipe fittings (kg)	0,600	0,700

HEAT METER CSLC MODEL

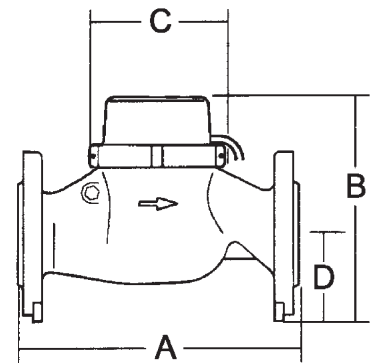
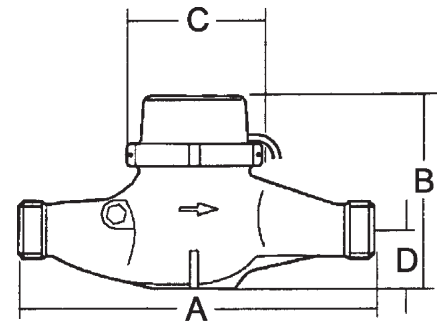
- * Volume measuring unit
- * CSLC/13 1/2" Qn 1.5 model
- * CSLC/20 3/4" Qn 2.5 model
- * Single-jet, dry dial type
- * Operating temperature 90°C (120°C)
- * Made with internal components specifically for use in heating systems
- * For horizontal, vertical and oblique installation
- * All models may be used in conjunction with our CC – CC1 – CC2 electronic units

The Company's policy is one of continuous product improvement and the right is reserved to modify the specifications contained herein without notice.



G. GIOANOLA srl
14049 NIZZA MONFERRATO (AT) - ITALY
Strada Alessandria 50

Tel. +(39)-0141-793536
Fax +(39)-0141-702757
E-mail: info@gioanola.it
<http://www.gioanola.it>



HEAT METER CALC MODEL

Nominal size of the meter	25	30	40	50
Qmax - Maximum flow rate (m ³ /h)	3,5	6	10	15
Qn - Nominal continuous flow rate Qn = Qmax (m ³ /h)	3,5	6	10	15
Qt - Transitional flow rate ±2% (l/h)	350	600	1000	1500
Qmin - Minimum flow rate ±5% (l/h)	65	90	160	200
Working pressure (bar)	16	16	16	16
A) Length without pipe fittings (mm)	260	260	300	270
Length with pipe fittings (mm)	320	320	370	-
B) Height (mm)	185	185	205	255
C) Maximum diameter (mm)	102	102	136	166
D) Height of tube (mm)	45	45	50	83
Weight (kg)	2,800	2,800	5,000	12,500

- * Volume measuring unit
- * CALC/25 1" Qn 3,5 model - threaded ends
- * CALC/30 1.1/4" Qn 6 model - threaded ends
- * CALC/40 1.1/2" Qn 10 model - threaded ends
- * CALC/50 2" Qn 15 model - flanged ends
- * Multy jet, dry dial type
- * Operating temperature 120°C
- * Made with internal components specifically for use in heating systems
- * All models may be used in conjunction with our CC – CC1 – CC2 electronic units

The Company's policy is one of continuous product improvement and the right is reserved to modify the specifications contained herein without notice.



G. GIOANOLA srl

14049 NIZZA MONFERRATO (AT) - ITALY
Strada Alessandria 50

Tel. +(39)-0141-793536
Fax +(39)-0141-702757
E-mail: info@gioanola.it
<http://www.gioanola.it>